

[Click here for video link](#)

MODULE 9 L02

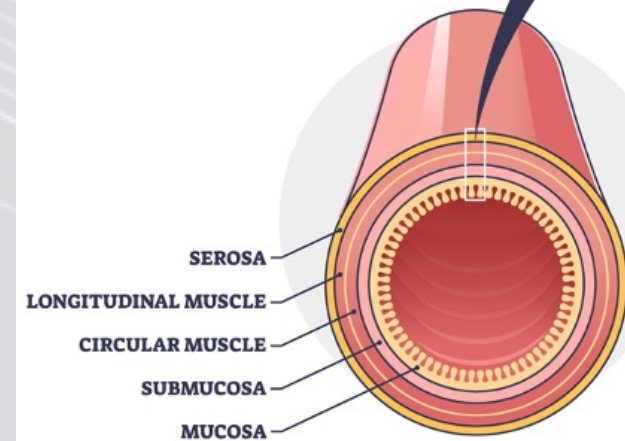
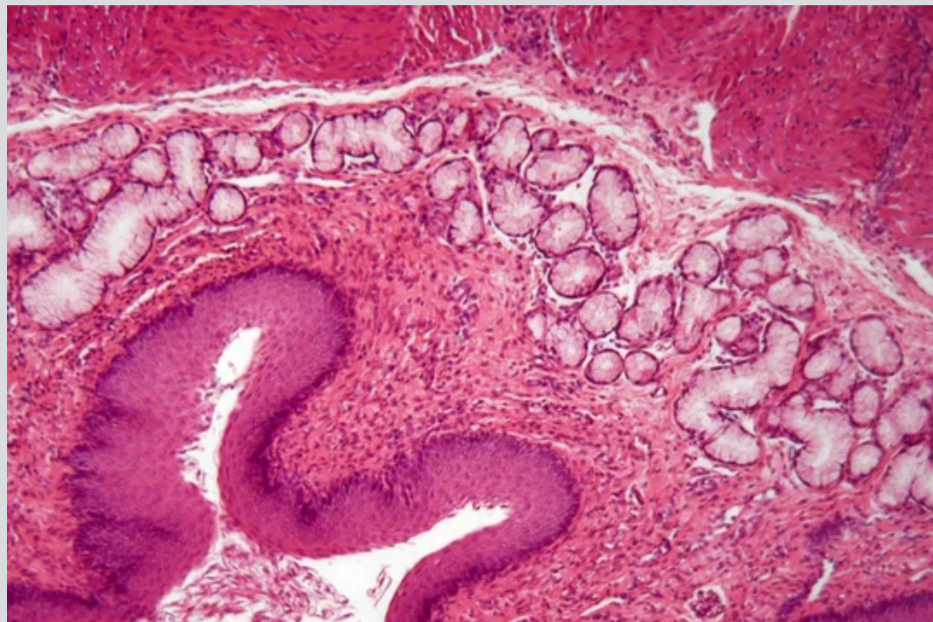
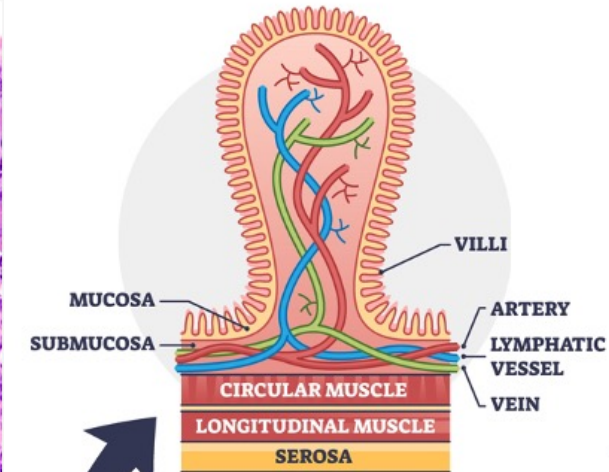
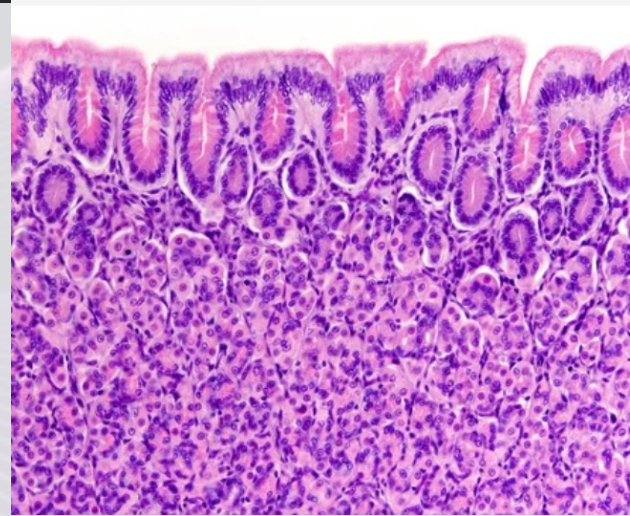
Histological Layers of Digestive Tract

Dr. Lisa Brinn
lbrinn@fiu.edu



2) Digestive Tract Layers

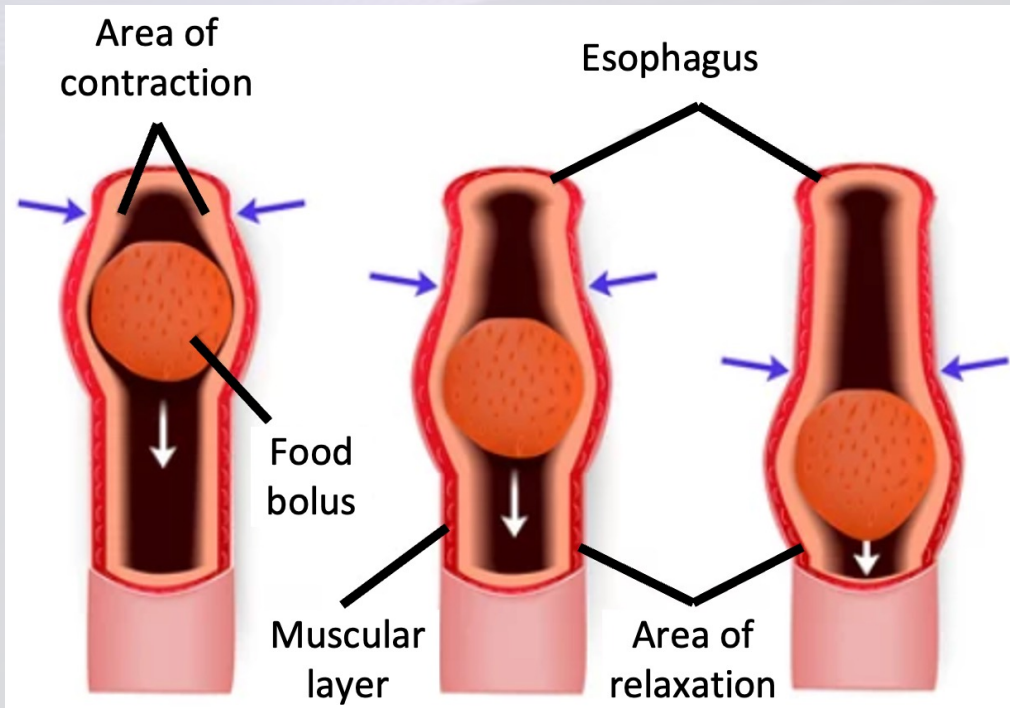
- Mucosa
 - ❖ Simple columnar epithelium
 - ❖ Stratified squamous epithelium
 - ❖ Organized into plicae
- Submucosa
- Muscularis externa
- Serosa



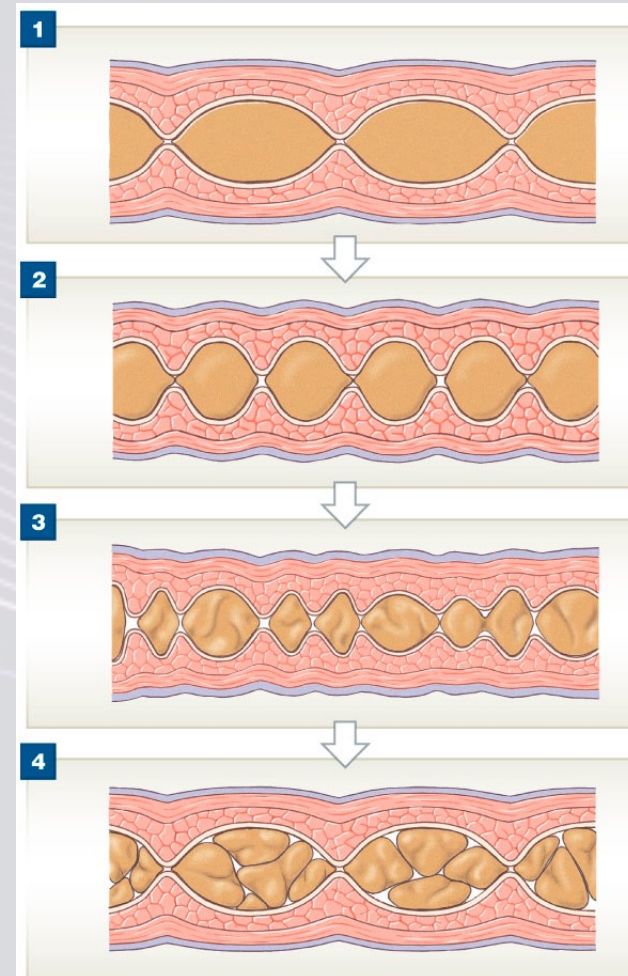
SMALL INTESTINE

Peristalsis and Segmentation

Peristalsis



Segmentation



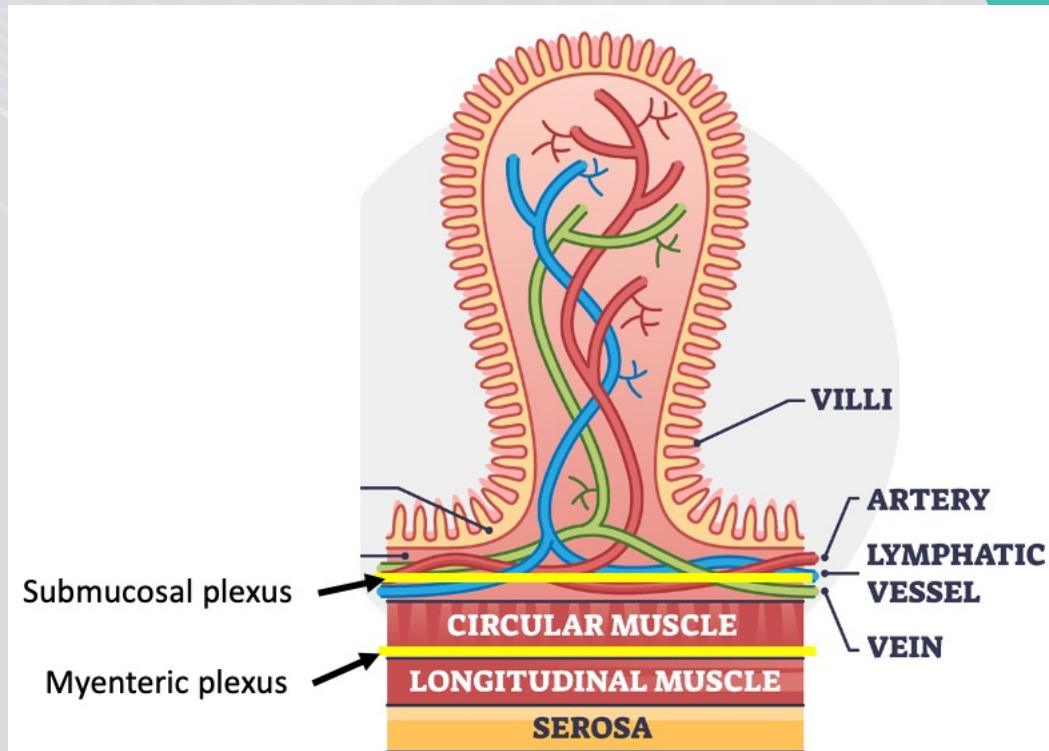
Neural Control

- Mechanoreceptors
 - ❖ Mechanical stimuli
- Chemoreceptors
 - ❖ Chemical stimuli
- Osmoreceptors
 - ❖ Osmotic stimuli

Appropriate reflex → digestion

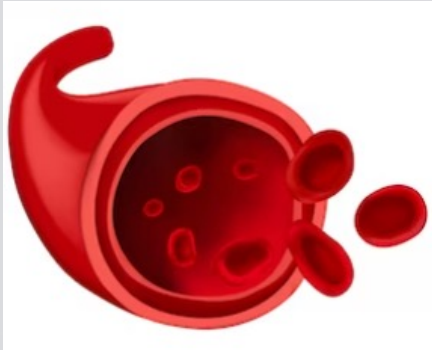
Gland activation

Muscle stimulation



Hormonal Control

- Gastrin
 - Secretin
 - Bicarbonate ions
 - Cholecystokinin (CCK)
 - Gastric inhibitory peptide
- } Secreted by endocrinocytes



Target organs